



# Planer Dust Chute

## PARTS LIST

Ref. No.	Part No.	Description	Qty.
1*	514521	Elbow, 2-1/2" diameter	1
2*	513419	Dust Chute	1
3	517920	Chute Bottom	1
4	517914	Clip	4

\* not included with the Dust Chute Retrofit Kit.

## Introduction

This product literature is for both the **Planer Dust Chute- 300001** (includes parts 1-4 listed above) and **Planer Dust Chute Retrofit Kit- 555643** (includes only parts 3 and 4 listed above). The Planer Dust Chute connects the Shopsmith Dust Collector— or other dust collectors with 2-1/2" diameter hoses— to either the Shopsmith **Thickness Planer** or **Professional Planer**. The Dust Chute provides high efficiency dust and chip collection.

## Safety

### WARNING

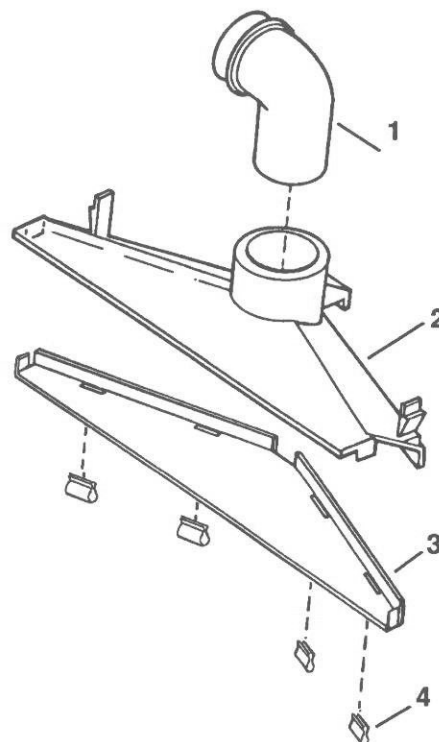
- Read, understand and follow all the information in both your dust collector and planer instruction manuals, whenever you operate your planer with the dust chute attached.

- Do not operate your planer with the Dust Chute installed— unless you connect and operate a dust collector while operating the planer at the same time. Failure to simultaneously operate a dust collector and planer (with the Dust Chute installed) will cause the dust chute to quickly clog, and could damage your planer and wood stock as well as cause a safety hazard.

- Position the outlet of the dust chute elbow so that when the dust collector hose is connected, it does not interfere with operations or limit access to the control box.

- Avoid touching the planer knives while installing the Dust Chute. They are sharp!

- Turn off and unplug the planer before proceeding with any of the following instructions for the Dust Chute.



### Tool Needed for these instructions:

- Medium screwdriver

### NOTE

Owners of the Retrofit Kit— skip Steps 1- 2 and go to Step 3.

### PREPARE THE PLANER

1. Use the screwdriver to remove the screw in the Shopsmith logo, located on the outfeed shield of your planer. Rotate the logo 180° to expose the sawdust port, as shown in Fig. 1.

2. Re-attach the Shopsmith logo with the screw. This will keep the cover from turning or rattling when the dust chute is installed.

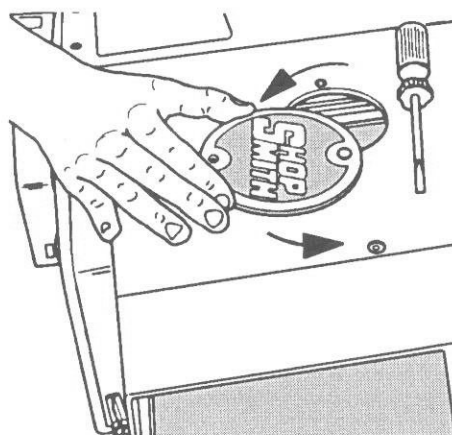


Fig. 1

## ASSEMBLE THE DUST CHUTE

**3. FOR OWNERS OF THE RETROFIT KIT ONLY:** Open the outfeed cover and remove the dust chute by firmly pressing in on its two wing tabs while lifting the chute. Now proceed with the rest of Step 3.

Align the metal chute bottom to the opening of the plastic dust chute, as seen in Fig. 2.

4. Attach the chute bottom with four clips, as shown in Fig. 3. Make sure the clips are in all the way and the "barbs" fully dig into the plastic dust chute.

## INSTALL THE DUST CHUTE ASSEMBLY

5. Unlock and raise the planer's outfeed shield. Place the assembled dust chute so the tab on its outlet rests on the outfeed tie bar and its two top wing tabs rest on the planer's side castings, as illustrated in Fig. 4. The nozzle of the dust chute should be slightly angled toward the rear of the planer.

6. Cautiously but firmly press in (toward the center) on the two top wing tabs, as shown in Fig. 5. At the same time gently press downward. The dust chute assembly should snugly pop into place.

## PREPARE FOR OPERATIONS

7. Lower the outfeed shield. The dust chute outlet should protrude through the sawdust port. Lock down the outfeed shield before operating the planer.

8. Install the dust chute elbow by inserting the elbow securely into the dust chute, oriented as shown in Fig. 6.

9. Connect the dust collector hose to the dust chute elbow and turn on the dust collector before operating the planer.

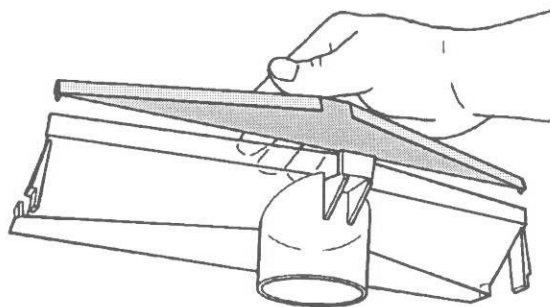


Fig. 2

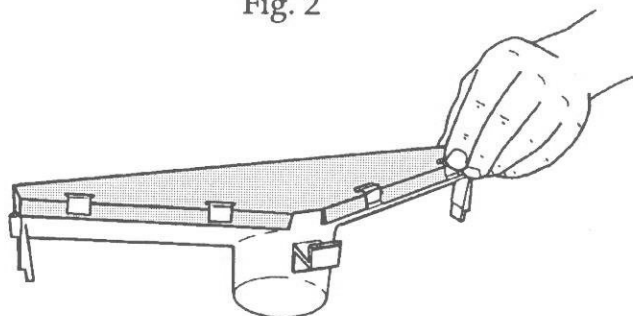


Fig. 3

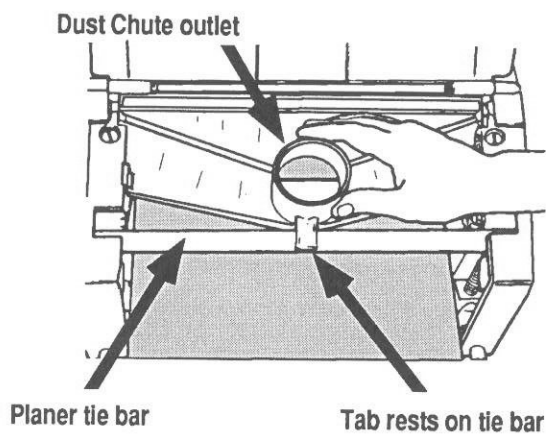


Fig. 4

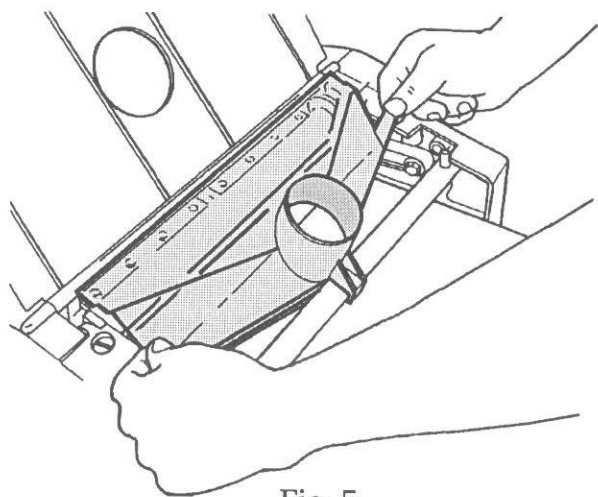


Fig. 5

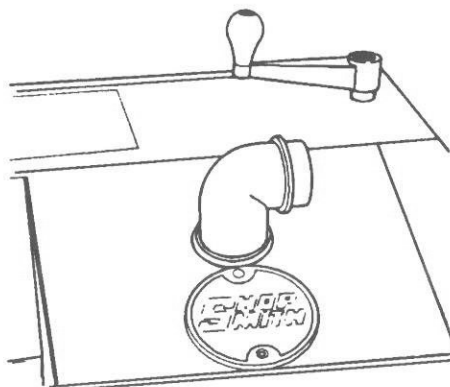


Fig. 6



**Shopsmith Inc.**  
3931 Image Drive  
Dayton, Ohio 45414

**Note:** If you have further questions or need help, visit the Shopsmith Store in your area, or call Customer Service:  
Toll Free 1-800-762-7555 (in Canada, 1-800-268-3998).

PL-5126 5/92  
©1992 Shopsmith, Inc.  
All Rights Reserved.  
Printed in the U.S.A.